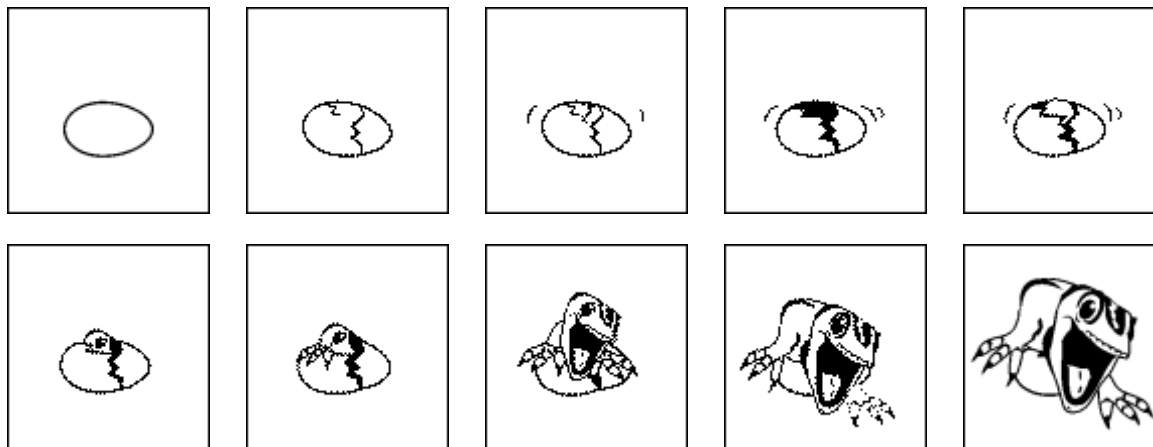


Egg Animation: Math Extension – Fractions



Question 1:

If an animation clip has 10 frames and all frames above play in 1 second, how long does it take to play each frame?

- a) $\frac{1}{10}$ second
- b) $\frac{10}{10}$ seconds
- c) $\frac{1}{10}$ minute

Question 2:

If an animation clip has 10 frames, how long would each frame play if you played the clip once in 2 seconds?

- a) $\frac{1}{20}$ second
- b) $\frac{2}{10}$ second
- c) $\frac{1}{5}$ second

Question 3:

If an animation clip has 10 frames, how long would each frame play if you played the clip twice in 1 second?

- a) $\frac{2}{20}$ second
- b) $\frac{1}{20}$ seconds
- c) $\frac{2}{5}$ second